

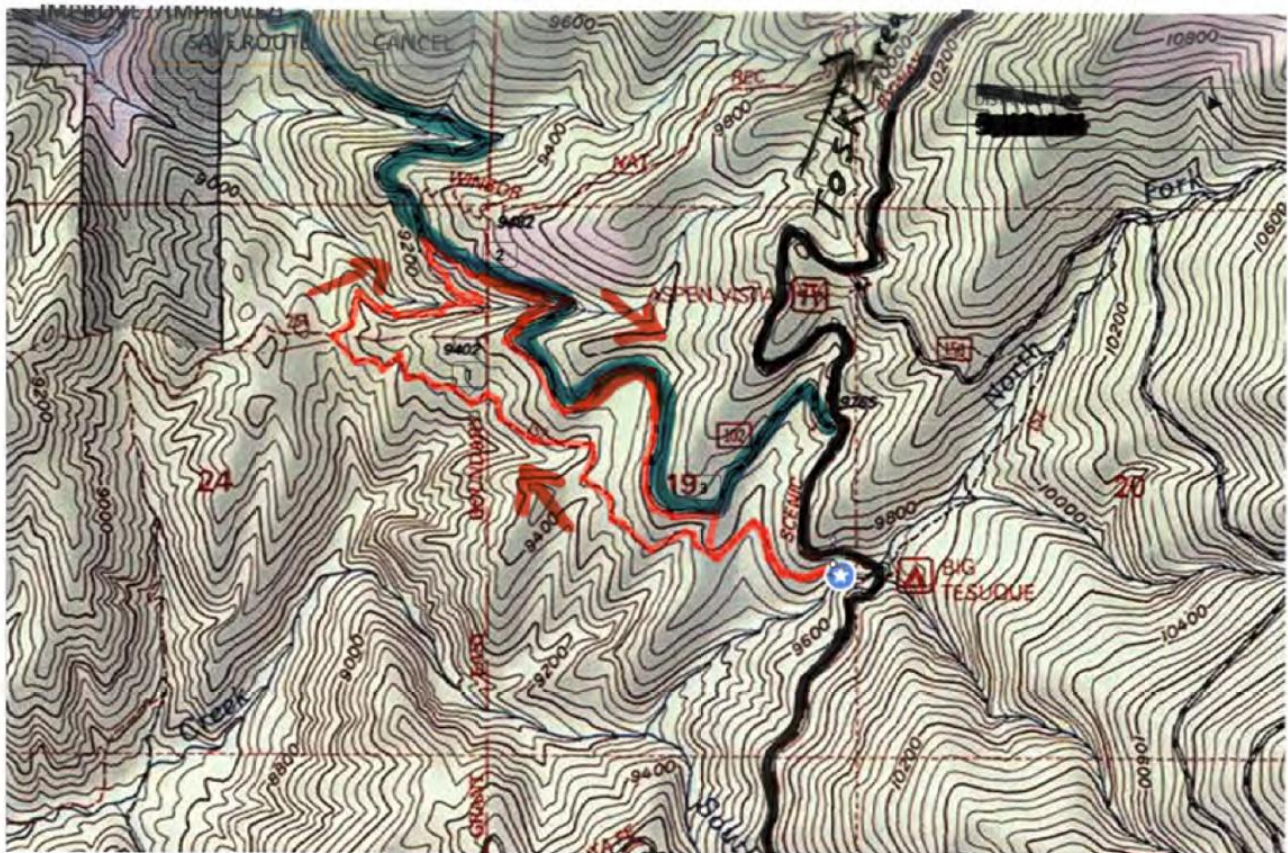
Santa Fe Snow Shoe Classic Location and Route Map

Sunday January 11, 2015. Registration opens 9 AM. Race Starts 10 AM.

Race staging area is the Big Tesuque Campground on Hyde Park Rd. Santa Fe National Forest. This is a small, tent only campground and picnic area with toilets on the right hand side at mile post 13.

Race registration and sign-in will be in the picnic area. Race start is across the road and down the trail about 50 yards. **Please carpool! Parking is limited.**

Route is a 3.8 mile clockwise loop consisting of Big Tesuque Trail #152, Winsor Trail # 254, Pacheco Canyon Rd. and unofficial, short but obvious linking trail back to the Big T trail. Start/end elevation is 9640 ft. with 610 ft. total climbing. Depending on snow conditions, race route may be modified.



— Race Route
— Hyde Park Rd
— Pacheco Canyon Rd
[Closed in Winter]

No Water or Aid Stations on Course – Carry your own!!!